



GIBNEY CLASSIC

Saturday 13th July 2024



SAILING INSTRUCTIONS

The Organising Authority is Howth Yacht Club CLG

1. RULES:

- 1.1 The event is governed by the rules as defined in The Racing Rules of Sailing (RRS), the prescriptions of Irish Sailing and the rules of each class concerned.
- 1.2 It is strongly recommended that all boats carry VHF Radios.

2. CHANGES TO SAILING INSTRUCTIONS:

Any change in the Sailing Instructions will be displayed at least 1.5 hours before the scheduled start of the first race so affected. For those boats leaving Malahide to compete, any changes to SI will be communicated via the Malahide YC Commodore.

3. COMMUNICATIONS TO COMPETITORS:

- 3.1 The Official Notice Board is online at <https://hyc.ie/open-events>
- 3.2 Courses shall be announced on Ch 77.
- 3.3 Competitors are advised to keep a listening watch on Ch. 77 where information relevant to racing may be broadcast. Should this information be broadcast, it shall not constitute outside assistance and shall not be the subject of any protest. Failure to broadcast this information shall not be the basis for any claim for redress.

4. CODE OF CONDUCT

[DP] Competitors and support persons shall comply with reasonable requests from race officials.

5. SIGNALS MADE ASHORE

- 5.1 Signals made ashore will be displayed at the flagpole at the top of HYC Marina Bridge
- 5.2 When flag AP is displayed ashore, "1 minute" is replaced with "not less than 45 minutes" in Race Signals AP

6. SCHEDULE OF RACES:

Class	Class Flag	Warning Signal
Class 1/2	No 1 and No 2	14:25
Non-Spinnaker	No 4	14:30
Class 3 / J80	No 3	14:35
Pupeteer 22	A	14:40
Howth 17	C	14:45
Squib	K	14:50

TIDE TIME: H.W. Malahide: 17.42 (3.2m)

7. CLASS FLAGS

See SI 6

8. RACING AREA

The race area will be North of Howth.

9. COURSES

The course applicable to each race will be announced 4 minutes before its start and again before the 1-minute signal. This changes RRS 27.1.

10. MARKS

10.1 Mark descriptions shall be as per Addendum A.

10.2 The port end of the start line will be an Orange inflatable mark.

10.3 The first mark for each class will be a Orange inflatable windward mark.

10.4 The Malahide mark may be a Yellow inflatable mark located approximately N53° 26.8', W006° 06.3'.

11. NOT USED

12. THE START

12.1 The starting line is between a red and white staff displaying an orange flag on the Committee Boat at the starboard end and the course side of the port-end starting mark.

12.2 Boats whose warning signal has not been made shall avoid the starting area during the starting sequence for other races.

12.3 A boat that does not start within 15 minutes after her starting signal will be scored Did Not Start, without a hearing. This changes RRS A5.1 and A5.2.

13. NOT USED

14. THE FINISH

The Finishing Line shall be between the red and white pole or main mast of the Committee Boat displaying a blue flag and an orange Finish Mark. Unless the course is shortened, the Finish line will be located in the vicinity of the entrance channel to Malahide Estuary.

15. NOT USED

16. TIME LIMITS

16.1 The Race Time Limit (see RRS 35), and the Finishing Window are shown in the table below:

Race Time Limit	Finishing Window
2.5 hour	30 minutes

16.2 The Finishing Window is the time for boats to finish after the first boat sails the course and finishes. Boats failing to finish within the Finishing Window, and not subsequently retiring, penalised or given redress, will be scored Time Limit Expired (TLE) without a hearing. A boat scored TLE shall be scored points for the finishing place one more than the points scored by the last boat in that class that finished within the Finishing Window. This changes RRS 35, A5.1, A5.2 and A10.

17. HEARING REQUESTS

- 17.1 The protest time limit is 60 minutes after the last boat in that class finishes the race or the race committee signals no more racing today, whichever is later.
- 17.2 Boats intending to protest shall notify and receive acknowledgement from the race finishing boat.
- 17.3 Protests shall be heard after racing, at Gibneys Malahide.
Please send a text message or WhatsApp message to Emmet Dalton 083 – 365 2970

18. NOT USED

19. SAFETY REGULATIONS

[DP] A boat that retires from a race shall notify the race committee at the first reasonable opportunity.

20.– 28 NOT USED

29. PRIZES

Prizes will be presented in Gibney's after the race.

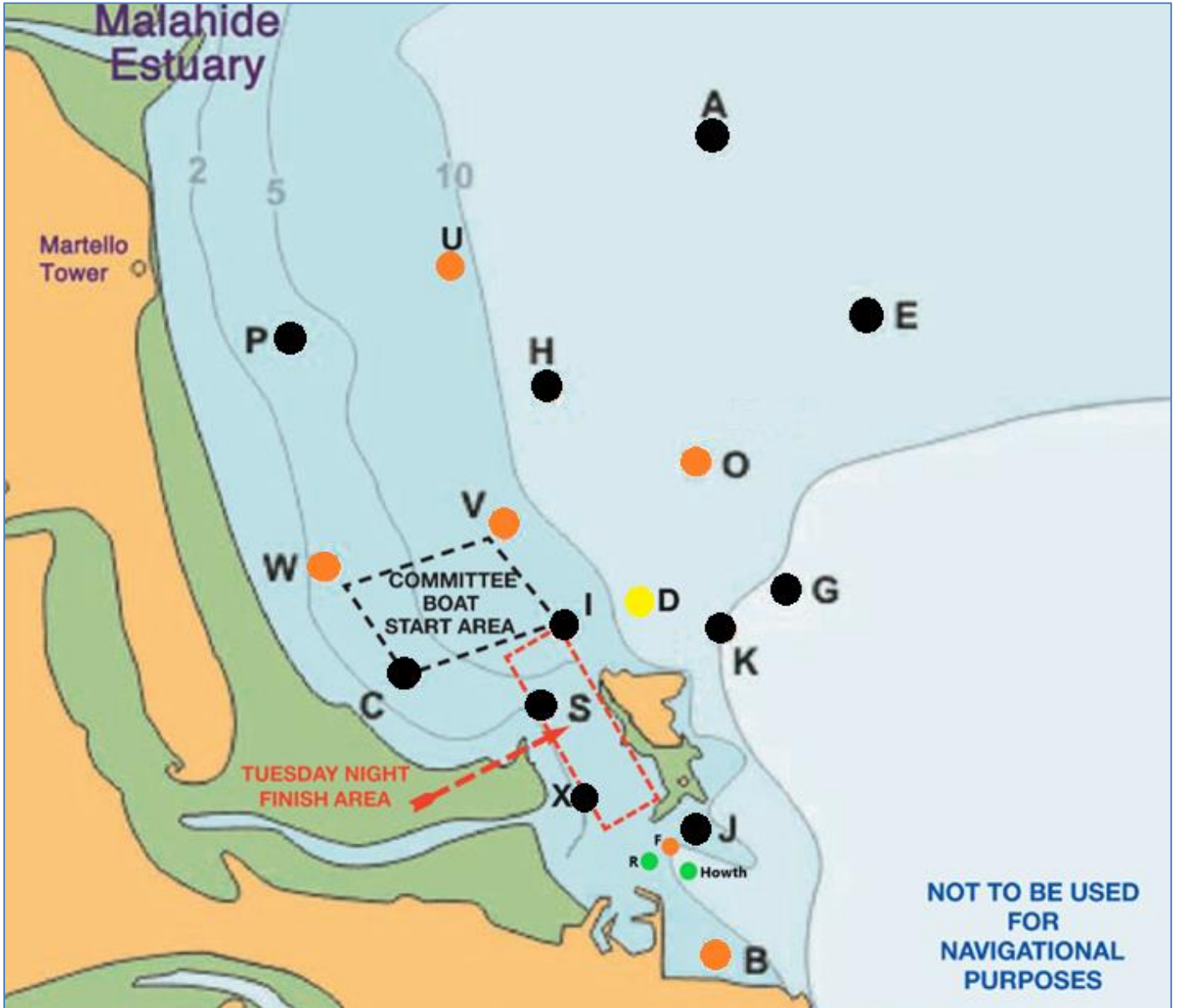
30. RISK STATEMENT

- 20.1 Rule 3 of the Racing Rules of Sailing states: "The responsibility for a boat's decision to participate in a race or to continue racing is hers alone."
- 20.2 Sailing is by its nature an unpredictable sport and therefore inherently involves an element of risk. By taking part in the event, each competitor agrees to and acknowledges the risk statement as included in the Notice of Race."

31. INSURANCE:

Each participating boat shall be insured with adequate valid third-party liability insurance.

ADDENDUM A



MARK DESCRIPTIONS / POSITIONS (Approx)				Latitude (N)	Longitude (W)
ID	Name	Shape	Colour	Deg. Min	Deg. Min
A	Apex	Conical	Black	53 26.76	06 03.26
B	Balscadden	Conical	Orange	53 23.30	06 03.26
C	Cush	Conical	Black	53 24.61	06 05.45
D	<u>Dunbo</u>	Conical	Yellow	53 24.73	06 03.85
E	East	Conical	Black	53 26.00	06 02.20
F	Finish	Cherry	Orange	Between Island and East Pier Starters Hut	
G	<u>Garbh</u>	Conical	Black	53 25.00	06 02.32
	Howth	IALA	Green	53 23.69	06 03.56
H	Hub	Conical	Black	53 25.71	06 04.43
I	Island	Conical	Black	53 24.70	06 04.36
J	<u>Thulla</u>	Conical	Black	53 23.80	06 03.40
K	Stack	Conical	Black	53 24.60	06 03.11
O	Osprey	Conical	Orange	53 25.41	06 03.52
P	Portmarnock	Conical	Black	53 25.63	06 05.80
Q	Rowan Rocks	IALA	Black	53 23.88	06 03.22
R	South Rowan	IALA	Green	53 23.78	06 03.88
S	Spit	Conical	Black	53 24.35	06 04.48
U	Ulysses	Conical	Orange	53 26.22	06 04.97
V	Viceroy	Conical	Orange	53 25.12	06 04.78
W	West	Conical	Orange	53 24.96	06 06.07
X	Xebec	Conical	Black	53 24.12	06 04.33
Z	Zephyr	Inflatable	Orange	Upwind of Start Line	